



1. TITLE

The thermo regulator is designed for automatic temperature control (maintaining the temperature set by the user) in rooms equipped with cable heating systems "warm floor".

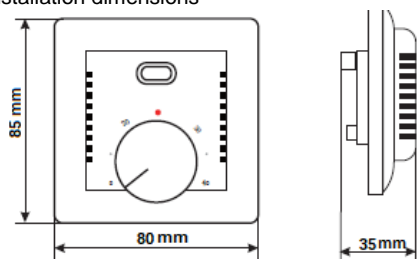
The thermostat is designed for standard flush mounting in a wall box with a diameter of 65 mm.

Recommended for installation with any electric heating systems (resistive cables and mats, IR foils, etc.) with power not more than 3520W/~220V or 3600W/~230V(16A).

2. TECHNICAL DATA

AC mains power supply~220B (±5%), 50 Гц
Maximum switching current.....16A
Maximum load power.....3520Вт/16A
Enclosure protectionIP20
Power consumption 5 Вт
Temperature control range..... 5÷40°C
Control error ±5°C

Overall and installation dimensions



ATTENTION! The graduations on the temperature controller are shown conventionally!

Temperature and resistance of the floor sensor:

Temperature, °C	Resistance, Ohm
5	22070
10	17960
20	12091
30	8312
40	5827

3. TEMPERATURE SENSOR INSTALLATION

Install the floor temperature sensor at the same time as the heating section. Install the sensor in the corrugated tube and plug the end of the tube to prevent the ingress of mortar or glue.

Center the corrugated tube with the sensor between the two strands of heating cable. Make a 20x20mm groove from the installation location to the mounting box and lead the corrugated tube with sensor to the mounting box.

4. THERMOSTAT INSTALLATION

Determine the installation location of the thermostat. Installation height 0.3...1.2m from the floor. Avoid direct sunlight on the thermostat. Prepare a 68mm diameter and 60mm deep hole in the wall. Then install the mounting box in the wall and fasten it.

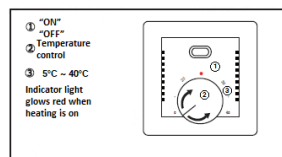
Bring the supply wires, the mounting ends of the heating section, the floor temperature sensor to the installation box in corrugated tubing. Turn the switch key to the off position. "0". Briefly apply voltage to the supply wire, use the phase indicator to identify the phase wire and mark it. Disconnect the 220V power supply. Connect the wires to the thermo regulator terminals according to the diagram on the back of the thermo regulator.

ATTENTION! Incorrect wiring can lead to failure of the thermostat, temperature sensor, and heating section. Use the services of a qualified technician.

Secure the temperature controller in the mounting box. Apply voltage to the thermostat.

5. THERMOREGULATOR ACTIVATION

Turn the temperature control knob counterclockwise to the end position. Turn the switch to the ON position. Turn the temperature controller knob clockwise, the LED will light up indicating that the temperature controller is on. Turning the temperature knob counterclockwise decreases the temperature, clockwise increases it.

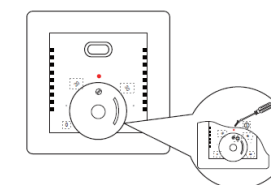
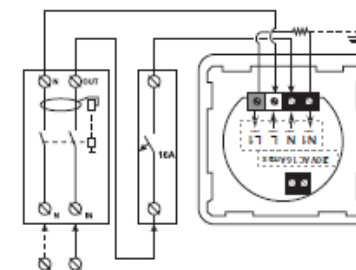
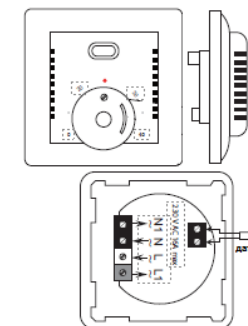


6. THERMOSTAT SHUTDOWN

Turn the temperature control knob counterclockwise to the end position. Turn the switch to the OFF position.

7. THERMOREGULATOR MAINTENANCE

The thermostat requires careful and careful handling. Do not allow rough mechanical impact on the surface of the product, as well as contact with acids, alkalis, solvents. Keep the thermostat clean, do not allow dirt, liquids, insects to get inside the product. The thermostat does not require additional maintenance.



Manufacturer: "ELEPHANT".
Адрес: Carrer d'Aragó, 264, 3-1, 08007 Barcelona, Spain, e-mail:
sales@valveelephant.com.
Made in China.

