

TECHNICAL DATA SHEET

Magnetic switch ELEPHANT ALS200D for pneumatic actuators

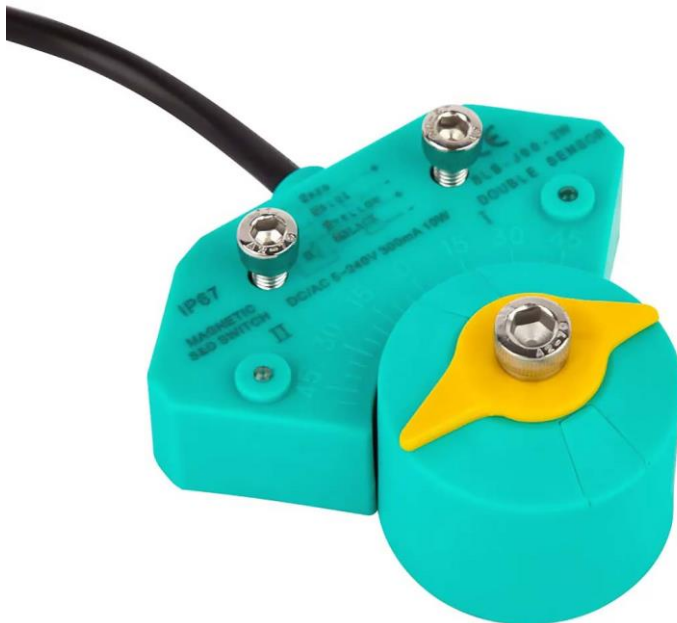


1. GENERAL PRODUCT INFORMATION

1.1. Product Name. Magnetic switch ELEPHANT ALS200D for pneumatic actuators.

1.2. Purpose. The magnetic switch ELEPHANT ALS200D is designed to convert the final values of the shaft position of pneumatic actuators or shut-off valves into electrical signals

1.3. Principle of operation. The functioning of the magnetic switch is based on the actuation of two independent, fully sealed magnetic sensors located inside a U-shaped housing.



1.4. Product Features:

- easy and quick installation on virtually any standard pneumatic actuator NAMUR;
- position sensors are protected against water and corrosion thanks to epoxy coating;
- both direct and alternating current connection:
- LED indication of valve end positions;
- safe, spark-free design;
- no wearing parts.



2. BASIC TECHNICAL DATA AND CHARACTERISTICS

Table 1

Parameter	Value
Housing Material	Plastic PP-GF30
Protection Class	IP67
Compatible Devices	- Pneumatic actuators;
	- Any actuators with a 90° rotation
Shaft Rotation Angle Indication (°)	0 – 90
Contact Type	NO
Sensor Interaction Type	Magnetic
Sensor Interaction Distance (mm)	1 ÷ 6
Switching Frequency (kHz)	0 ÷ 4.8
Visual Indication	Two LEDs
Nominal Voltage (V)	5 ÷ 240 AC/DC
Nominal Current (mA)	0 ÷ 300
Nominal Power (W)	10
Permissible Ambient Temperature (°C)	-40 to +85
Cable Output	4 wires (2 wires/open, 2 wires/closed)



3. U-SHAPED ENCLOSURE DIMENSIONS

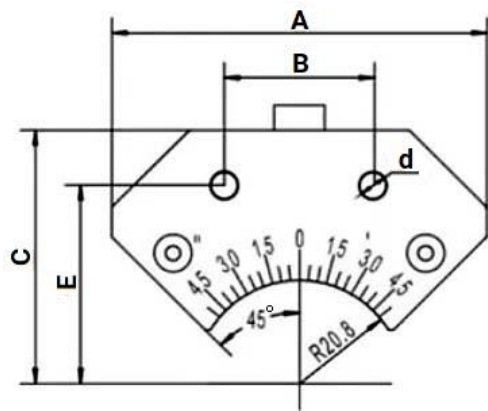
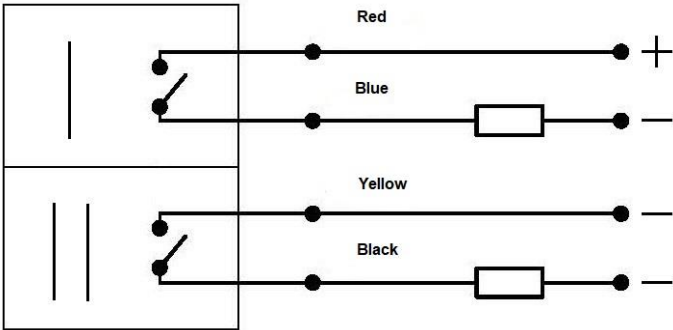


Table 2

A	B	C	E	d
MM				
75	30	51	40	Ø5,5

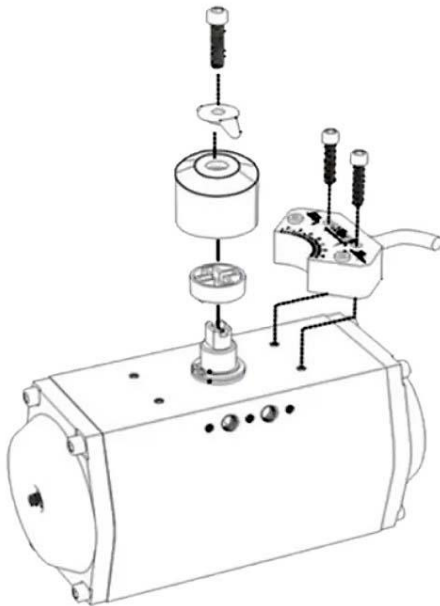
4. WIRING DIAGRAM



5. INSTALLATION AND OPERATING INSTRUCTIONS

5.1. Installation, connection and maintenance of the magnetic switch must be carried out by qualified personnel in compliance with the requirements of this data sheet and other rules/standards/regulations accepted by the company.

5.2. Before connecting and maintaining the magnetic switch, make sure that there is no voltage on the connecting wires.



5.4. Maintenance should be carried out with the power supply switched off and no voltage or current in its output circuits. During maintenance, it is necessary to prevent the actuator, on which the actuator is mounted, from tripping..

5.5. Frequency of maintenance is established by responsible persons of the enterprise depending on operating conditions. It is recommended to carry out technical inspection at least once a month.

6. TRANSPORT AND STORAGE

6.1. Storage of the saddles should be carried out in packed form in closed rooms at temperature from minus 25 °C to plus 50 °C and relative air humidity not more than 80% (without condensation).

6.2. Products in the manufacturer's packaging may be transported by any type of transport with protection from dust, rain and snow. During transport the storage conditions must be observed.

7. UTILIZATION

7.1._The product is disposed of in accordance with the procedure established at the enterprise (remelting, burial, resale).



8. WARRANTY OBLIGATIONS

8.1. Warranty period - 12 months from the date of commissioning, but not more than 18 months from the date of sale.

8.2. The warranty applies to equipment installed and used in accordance with the installation instructions and product specifications described in this data sheet.

8.3. The manufacturer guarantees the conformity of the product to the safety requirements, provided that the consumer complies with the rules of transport, storage, installation and operation.

8.4. The warranty covers all defects caused by the fault of the manufacturer

8.5. The warranty does not apply:

- parts and materials of the product subject to wear and tear;
- for cases of damage caused by:
 - Modifications to the original design of the product;
 - Violation of general installation recommendations;
 - Faults caused by improper maintenance and warehousing;
 - Improper use and application of the equipment.

9. WARRANTY TERMS

9.1. Claims to the quality of the goods may be made during the warranty period.

9.2. Defective products are repaired or exchanged for new ones free of charge during the warranty period. ELEPHANT decides whether to replace or repair the product. The replaced product or its parts resulting from the repair shall become the property of 'ELEPHANT'.

9.3. Costs related to dismantling, installation and transport of the defective product during the warranty period shall not be reimbursed to the Buyer.

9.4. If the claim is unfounded, the Buyer shall pay the costs of diagnostics and expertise of the product.

9.5. Products are accepted for warranty repair (as well as for return) fully assembled.



WARRANTY CARD № _____

№	Product Name	Packs

Name and address of the trading organisation

Date of Sale _____ Seller's signature _____
Stamp or seal of the trading organisation _____ Acceptance stamp _____

I agree with the terms and conditions of the warranty:

Buyer _____ (signature)

Warranty period - 12 months from the date of commissioning, but not more than 18 months from the date of sale.

For warranty repairs, complaints and product quality claims, please contact ELEPHANT at: Carrer d'Aragó, 264, 3-1, 08007 Barcelona, Spain. E-mail address: sales@valveelephant.com.

When making a complaint about the quality of goods, the buyer shall present the following documents:

1. A free-form application, which shall specify:
 - Name of the organisation or full name of the buyer, actual address, contact telephone numbers;
 - Name and address of the organisation that carried out the installation;
 - Basic parameters of the system in which the product was used;
 - Short description of the defect.
2. Document confirming the purchase of the product (delivery note, receipt).
3. Certificate of work performed for the installation of the product.
4. This completed warranty card.

A note on the return or exchange of goods _____

Date: « ____ » _____ 202__ r. Caption _____

