

TECHNICAL DATA SHEET

**Butterfly valve Elephant
WBV14xE-2W-Fb-ISO-R DN500-600 16 bar cast iron,
interflanged, with reducer**



1. GENERAL PRODUCT INFORMATION

1.1. Product name: Butterfly valve Elephant WBV14xE-2W-Fb-ISO-R DN500-600 16 bar cast iron, interflanged, with gearbox.

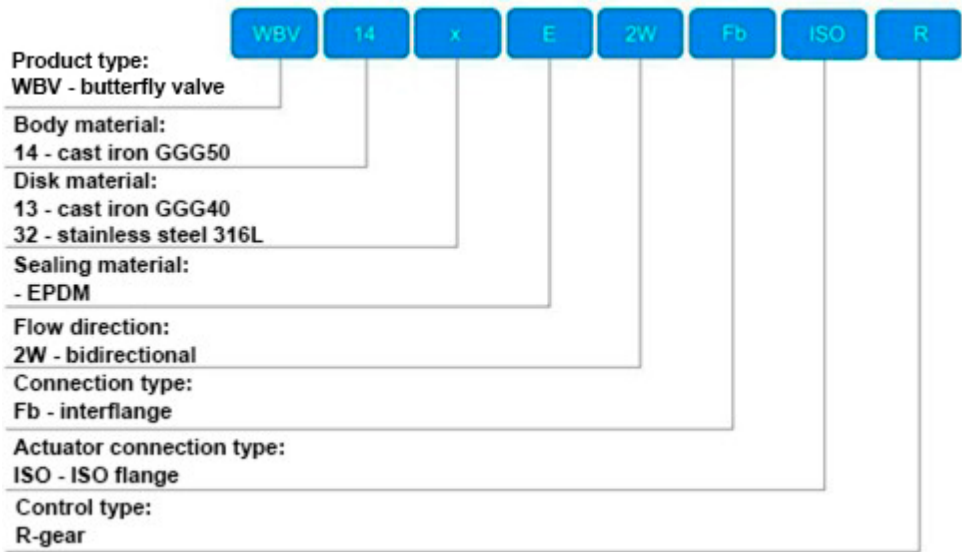
1.2 Purpose: Rotary disk gate valve is designed for use as shut-off or regulating valves for flow control in heat supply systems, water supply systems, in technological processes of food, chemical, oil and gas, pulp and paper and other industries.

1.3 Principle of operation: Gates are opened and closed by turning the disk by 90°. Opening is performed by turning the gear wheel counterclockwise, closing - clockwise.



**Image is for general design purposes and may differ from the original.*

1.4. Deciphering the designation:



2. MAIN TECHNICAL DATA AND CHARACTERISTICS

Table 1: Main parameters

Nominal diameter DN, mm	500; 600
Nominal pressure, bar	16
Working medium temperature t, °C	from -20 to +120
Working medium	water, air, natural gas, petroleum products, other media neutral to materials of gate construction
Flow direction	double-sided
Control type	reducer
Gearbox housing material	cast iron QT450
Gearbox ratio	DN500 - 560:1 DN600 - 574:1
Pipeline connection	interflange
Valve body material	cast iron GGG50
Disk material	cast iron GGG40 or stainless steel AISI 316L
Seal material	EPDM
Average service life, years	3
Average life, closing/opening cycles	5 000



3. BASIC PART MATERIALS

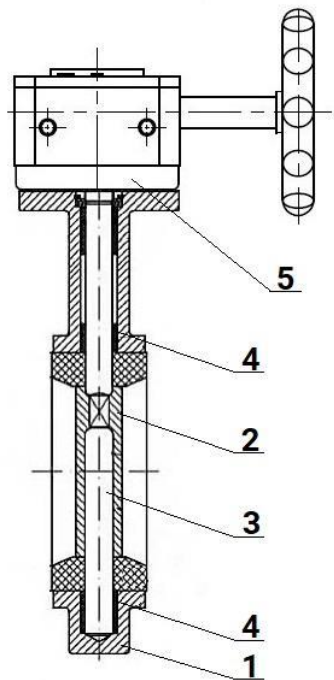


Table 2. Material specification

Nº	Part name	Material
1	Body	cast iron GGG50
2	Disk	cast iron GGG40 or stainless steel AISI 316L
3	Stem	stainless steel SS 416
4	Seal	EPDM
5	Gearbox	-

4. WEIGHT AND DIMENSIONAL PARAMETERS

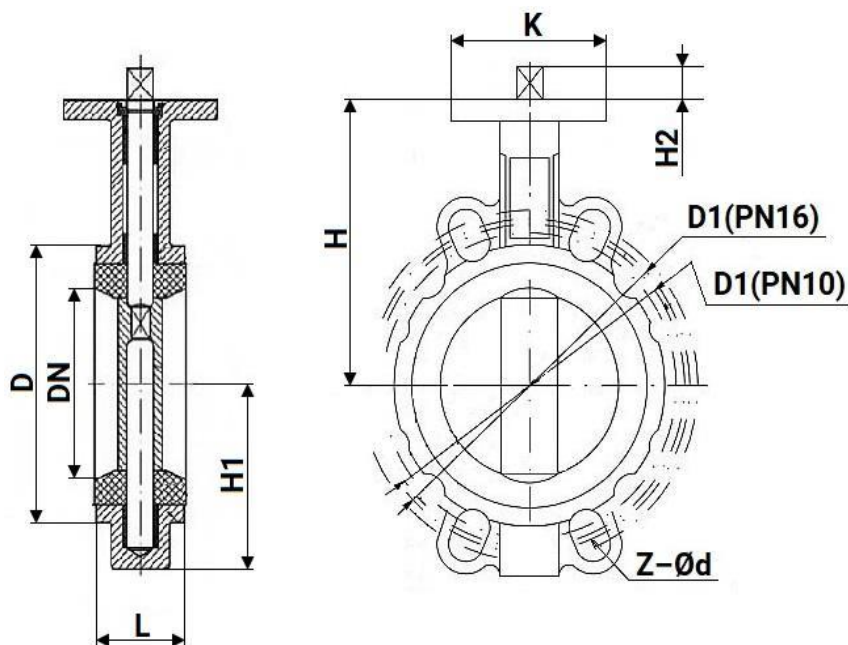


Table 3: Dimensional characteristics and weight

DN	L	D	D1 (16 bar)	D1 (PN10)	Z-Ød	H	H1	H2	K	Weight
	mm									kg
500	127	715	650	620	20-Ø33	467	363	65	175	95,5
600	152	840	770	725	20-Ø36	548	424	70	210	162,0

Table 4: Type of ISO flanges, stem square and shaft torques

DN	ISO 5211	Stem square, mm	Torque, Nm
500	F14	27x27	3 711
600	F16	36x36	4 835



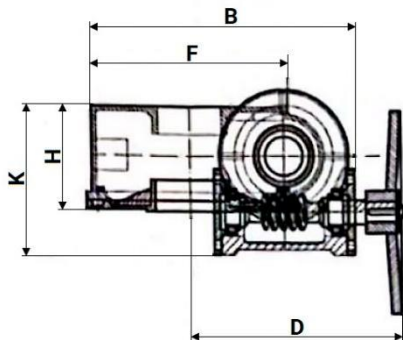
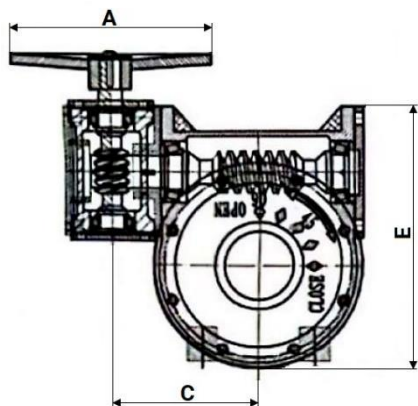


Table 5. Dimensions of gearboxes

	A	B	C	D	E	F	H	K
	mm							
DN500	270	260	145	235	280	200	98	145
DN600	385	320	200	280	330	275	126	170



5. INSTALLATION AND OPERATING INSTRUCTIONS

5.1. Installation, operation and maintenance of the gate valves may be performed by personnel who have studied the gate valve design, safety rules, requirements of the installation, adjustment, operation and maintenance manual and who are certified for the relevant type of work.

5.2. Gates should be installed on pipelines for media and parameters specified in the product passport.

5.3. Before installation it is necessary to clean (blow out) pipelines from dirt, sand, scale.

5.4. Butterfly valves should only be installed between collar flanges.

5.5. The inner diameter of the flanges shall correspond to the nominal diameter of the butterfly valve.

5.6. The flanges shall be arranged flat-parallel to each other at a distance ensuring free (without excessive effort) placement of the gate between them. The sealing surfaces of the flanges shall be free of nicks, pits, burrs and other surface defects.

5.7. Before starting installation, the butterfly valve disk should be slightly opened, but so that the disk does not protrude beyond the butterfly valve body.

5.7.1. Center the butterfly valve and slightly tighten the bolts (studs), but do not tighten them. Open the rotary bolt disk to the “fully open” position.

5.7.2. Tighten the bolts (studs) so that the flanges and the gate body (metal part) are in contact. The flange connections should be tightened evenly in three or even four passes, in a “crosswise” sequence.

5.7.3. Tightening of bolts on inter-flange connections should be uniform all around. Next, slowly close and open the butterfly valve. If the gate has been installed correctly, the gate should open and close freely.

5.8. Tightness tests should be carried out in accordance with the company's procedures.

5.9. During operation, periodic inspections (routine work) should be carried out at the time established by the operating organization, depending on the operating modes of the system.

5.10. During inspection check: general condition of the gate and gearbox, condition of fastening connections, tightness of seals.

5.11. To ensure labor safety it is strictly forbidden to perform works on defects elimination in the presence of working medium pressure in the pipeline.



6. CONDITIONS OF TRANSPORTATION AND STORAGE

6.1. Transportation and storage conditions comply with the internal instructions of the company.

6.2. The gates can be transported by any type of transport. At the same time, the gate must be installed on transportation means to exclude the possibility of mechanical damage, internal surfaces must be protected from contamination.

6.3. During transportation and storage the gate must be in the position of incomplete closing, i.e. the locking disk must be in loose contact with the collar surface - without deformation of the rubber.

6.4. When loading and unloading, the gates should be slung by the body.

6.5. The gates should be stored in dry warehouses, protected from direct sunlight and at least 1 m away from heat-emitting devices, as well as not exposed to oil and gasoline.

6.6. During long-term storage of the gate valve it is necessary to inspect it periodically (at least twice a year), remove external dirt and rust, if necessary treat the seat seal with silicone spray lubricant.

7. UTILIZATION

7.1. The product is utilized in accordance with the procedure established at the enterprise (remelting, burial, resale).

7.2. Before sending for utilization, residues of the working medium shall be removed from the fitting. Methods of removal of the working medium and decontamination of the valve shall be approved in accordance with the established procedure at the enterprise operating the product.



8. WARRANTY OBLIGATIONS

8.1. Warranty period - 12 months from the date of commissioning, but not more than 18 months from the date of sale.

8.2. The warranty applies to equipment installed and used in accordance with the installation instructions and product specifications described in this data sheet.

8.3. The manufacturer guarantees compliance of the product with safety requirements, provided that the consumer complies with the rules of transport, storage, installation and operation.

8.4. The warranty covers all defects caused by the fault of the manufacturer.

8.5. The warranty does not apply:

- parts and materials of the product subject to wear and tear;
- for cases of damage caused by:
 - modifications to the original design of the product;
 - violation of general installation recommendations;
 - faults caused by improper maintenance and storage; improper operation and use of the equipment.

9. WARRANTY TERMS

9.1. Claims to the quality of the goods may be made during the warranty period.

9.2. Defective products are repaired or exchanged for new ones free of charge during the warranty period. ELEPHANT decides whether to replace or repair the product. The replaced product or its parts resulting from the repair shall become the property of 'ELEPHANT'.

9.3. Costs related to dismantling, installation and transport of the defective product during the warranty period shall not be reimbursed to the Buyer.

9.4. If the claim is unfounded, the Buyer shall pay the costs of diagnostics and expertise of the product.

9.5. Products are accepted for warranty repair (as well as for return) fully assembled.



WARRANTY CARD № _____

№	Product Name	Packs

Name and address of the trading organisation

Date of sale _____ Seller's signature _____

Stamp or seal of the trading organisation

Acceptance stamp

I agree with the terms and conditions of the warranty:

Buyer _____ (signature)

Warranty period - 12 months from the date of commissioning, but not more than 18 months from the date of sale.

For warranty repairs, complaints and product quality claims, please contact ELEPHANT at:
Carrer d'Aragó, 264, 3-1, 08007 Barcelona, Spain E-mail address: sales@valveelephant.com.

When making a complaint about the quality of goods, the buyer shall present the following documents:

1. A free-form application, which shall specify:

- name of the organisation or full name of the buyer, actual address, contact telephone numbers;
- name and address of the organisation that carried out the installation;
- basic parameters of the system in which the product was used;
- a brief description of the defect.

2. Document confirming the purchase of the product (delivery note, receipt).

3. Act of hydraulic test of the system in which the product was installed.

4. This completed warranty card.

A note on the return or exchange of goods _____

Date: « ____ » _____ 202__ yr. Caption _____

